



MCL INCORPORATED

Item		Sheet No.	
Service		Item No.	
Tag No.		Q'ty	
Model No	MCL-B80A3L-DA		

DESCRIPTION

SERVICE CONDITION		FLUID : OIL							
Condition	Flow Rate (m3/h)	Inlet Press (kgf/cm2 A)	Outlet Press	Inlet Temp. (°C)	Req'd Cv	Travel (%)	Velocity (ft/min)	Noise Level (dBA)	REMARK
Maximum									
Normal									
Minimum									

Specific Gravity		Viscosity (Pa.s)		Design P. (kgf/cm2 G)	
Molecular Weight		Vapor Press.(Mpa.a)		Design Temp.(°C)	
Pipe Line Spec.		Critical Press (Mpa.a)			
Inlet Pipe Size & Sch.		Outlet Pipe Size & Sch.			

VALVE BODY		ACUATOR		LIMIT SWITCH BOX	
Model No.	MCL-B80A3L-DA	Model No.	MAC-125D	Maker	HKC
Type	3WAY BALL VALVE	Type	DOUBLE	Model No.	APL-810N
Size	80A	Air To		TYPE	SPDT
Class Rating	JIS 10K R.F	Air Fail Position	CLOSE (L PORT)	Enclosure	EX D IIC T6
End Connection	FLANGED	Sol. V/V Energized to	OPEN		
Bonnet Type	STD	Handwheel & Mounting			
Material	Body	SCS13	Spring R.(kg /cm ² G)		
	BALL		Supply (kgf/cm2G)	4 ~ 6	
	BALL SEAT		Orientation		
	stem		Stroke	0 ~90Deg	
Lubricator/Iso.Valve					
Lubricant					
Flange Face Finish					
Leakage Class	CLASS VI				

VALVE TRIM		SOLENOID VALVE	
Type		Maker	POWER GENEX
Anty Cavity/Low Noise		Model No.	ESV
Charcteristic	ON-OFF	Power	
Port size(mm)	80A	Output Signal	
Operating Angle(°)	90 Deg	Enclosure	EX D IIC T6
Flow Direct		Electric Connection	PT.F1/2"
Balanced/Unbalanced			
Guide type	TOP & BOTTOM	AIR SET(Filter+Regulator+Gauge)	
Material	Disc	Maker	TISSIN
	Seat	Model No.	TS-300
	Stem	Set. Press.(kgf/cm2 G)	
		Air Connection	PT.F1/4"
Leakage Class			

NOTE SOLENOIDS VAVLE POWER (DC24V, AC110V, AC220V)

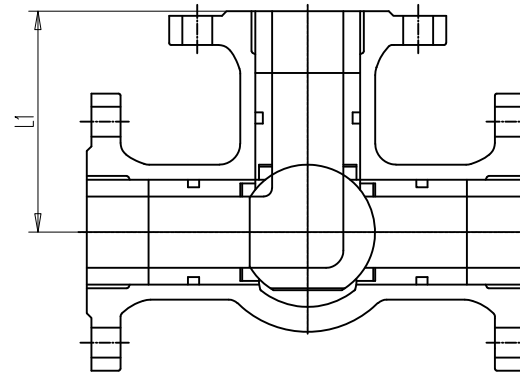
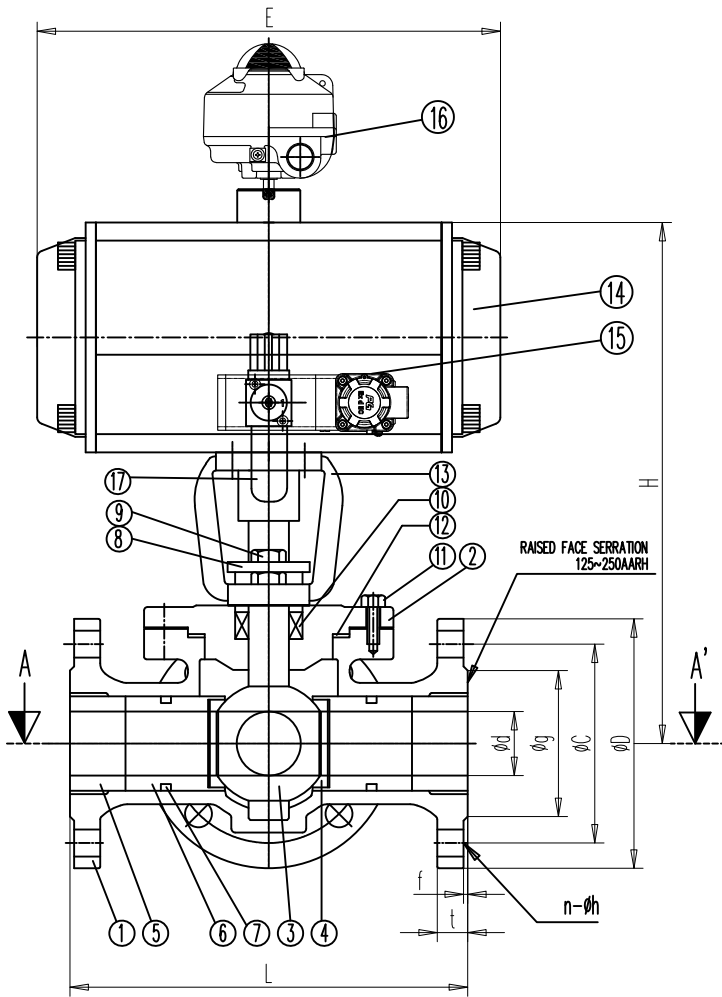
**PNEUMATIC
3-WAY SHUT OFF BALL VALVE
SPECIFICATION SHEET**

0	R.J.OH	FOR APPROVAL	2022.06
REV.	BY	DESCRIPTION	DATE

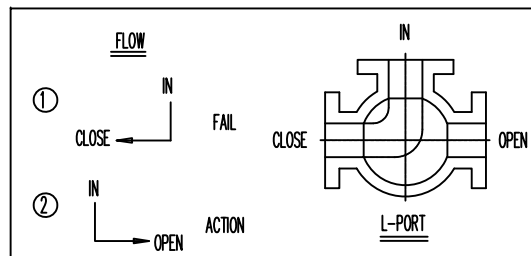
* REFERENCE DIMENSION

UNIT : mm

SIZE	L	L1	FLANGE							* H	* E	Q'TY
			∅ d	∅ g	∅ C	∅ D	f	t	n - ∅h			
80A	290	145	80	126	150	185	2	18	8 - 19	380	350	1 EA



SEC. A-A'



REFERENCE CODE

FACE TO FACE DIMENSION: MAKER STANDARD
 END FLANGE DIMENSION : JIS B2220
 VALVE TESTING : MAKER STANDARD

No.	Model No.	MCL-B80A3L-DA	Q'TY
	Material	SCS13/304	
Part Name			
1	BODY	SCS 13	1
2	CAP	SCS 13	1
3	BALL & STEM	SCS 13	1
4	SEAT RING	RTFE (CARBON 30%)	3
5	RETAINER	SCS 13	3
6	SEAT RING CASE	SCS 13	3
7	O-RING	N.B.R	3
8	PACKING GLAND	SCS 13	1
9	GLAND BOLT	SUS 304	6
10	PACKING	PTFE	1SET
11	CAP BOLT	SUS 304	1SET
12	GASKET	PTFE	1
13	BRACKET	FCD 450(E.D COATING)	1
14	ACTUATOR		1
15	SOLENOID VALVE		1
16	LIMITS SWITCH		1
17	AIR SET		1

TEST SPECIFICATION (kg/cm ²)				
ALL MATERIAL	SHELL	SEAT		
TEST FLUID	HYDRO	HYDRO	AIR	
TEST PRESSURE	21	15.4	6	
CLIENT	MCL			
ITEM NO.				
△				
△	22.06.28	FOR REFERENCE	K.B.S	J.K.S C.C.M
REV.	DATE	DESCRIPTION	PRE'D	REV'D
TITLE		JIS 10K AUTO R.F 3-WAY BALL VALVE	PROJECT.	
DATE			PRE'D BY	
JUN.28.2022		SCALE	KIM.B.S	
N/S		REV'D BY		JUNG.K.S
DWG.NO.		APP'D BY		CHOI.C.M
DWG\REFERENCE\S22-06-118-1A				



Tel : 031-499-7557
 Fax : 031-8041-3230
 http://www.j-mcl.com/